

# TOBEOUTERWEAR



2016



The men and woman that choose our path and follow our trails are  
Vikings, they are not afraid of the cold and the wild.  
We keep them safe, dry, and warm because its what we do.







# THE PRIVUS SERIES

The Privus series truly represents the very core  
from which TOBE originated.

This is where colors meet function.

This is where passion meets nature.

With the Privus series we reach out to those who share our  
love for the cold and wild, the beauty of the untouched, and a  
life far from your everyday boundaries.

Its personal, it's dedication, and its a  
life you choose.

Only you can understand.





# PRIVUS MONO SUIT JET BLACK

900216-001-SIZE

CORDURA

Sympatex

2.0  
TOBE

Shell: 2 layer Sympatex® Cordura®  
Membrane: Sympatex® 45,000mm  
Sealed seams: Fully seam sealed  
Insulation: Non-insulated  
Sizing: 2XS - 4XL

- \* 100% windproof
- \* 100% waterproof
- \* Optimal breathability
- \* YKK Aquaguard zippers
- \* Kevlar reinforcements
- \* Cordura® fabrics
- \* Reinforced seams
- \* Double stitching for durability
- \* Vent zips under arms
- \* Adjustable ergo braces
- \* Adjustable waist
- \* Adjustable hood
- \* Removable hood
- \* Integrated leg gaiters with metal hooks
- \* Integrated hand gaiters
- \* 6 exterior pockets
- \* Goggle pocket
- \* Cellphone pocket
- \* Mesh and tafeta lining
- \* Kill switch D-ring

\* Use with Merino Wool layering  
to ensure top performance





# PRIVUS MONO SUIT LEGION BLUE

900216-002-SIZE

CORDURA

Sympatex

2.0  
TOBE

Shell: 2 layer Sympatex® Cordura®  
Membrane: Sympatex® 45,000mm  
Sealed seams: Fully seam sealed  
Insulation: Non-insulated  
Sizing: 2XS - 4XL

- \* 100% windproof
- \* 100% waterproof
- \* Optimal breathability
- \* YKK Aquaguard zippers
- \* Kevlar reinforcements
- \* Cordura® fabrics
- \* Reinforced seams
- \* Double stitching for durability
- \* Vent zips under arms
- \* Adjustable ergo braces
- \* Adjustable waist
- \* Adjustable hood
- \* Removable hood
- \* Integrated leg gaiters with metal hooks
- \* Integrated hand gaiters
- \* 6 exterior pockets
- \* Goggle pocket
- \* Cellphone pocket
- \* Mesh and tafeta lining
- \* Kill switch D-ring

*\* Use with Merino Wool layering  
to ensure top performance*





# PRIVUS MONO SUIT CHILI PEPPER

900216-003-SIZE

CORDURA

Sympatex

2.0  
TOBE

Shell: 2 layer Sympatex® Cordura®  
Membrane: Sympatex® 45,000mm  
Sealed seams: Fully seam sealed  
Insulation: Non-insulated  
Sizing: 2XS - 4XL

- \* 100% windproof
- \* 100% waterproof
- \* Optimal breathability
- \* YKK Aquaguard zippers
- \* Kevlar reinforcements
- \* Cordura® fabrics
- \* Reinforced seams
- \* Double stitching for durability
- \* Vent zips under arms
- \* Adjustable ergo braces
- \* Adjustable waist
- \* Adjustable hood
- \* Removable hood
- \* Integrated leg gaiters with metal hooks
- \* Integrated hand gaiters
- \* 6 exterior pockets
- \* Goggle pocket
- \* Cellphone pocket
- \* Mesh and tafeta lining
- \* Kill switch D-ring

\* Use with Merino Wool layering  
to ensure top performance





# PRIVUS MONO SUIT CITRUS

900216-005-SIZE

CORDURA

Sympatex

2.0  
TOBE

Shell: 2 layer Sympatex® Cordura®  
Membrane: Sympatex® 45,000mm  
Sealed seams: Fully seam sealed  
Insulation: Non-insulated  
Sizing: 2XS - 4XL

- \* 100% windproof
- \* 100% waterproof
- \* Optimal breathability
- \* YKK Aquaguard zippers
- \* Kevlar reinforcements
- \* Cordura® fabrics
- \* Reinforced seams
- \* Double stitching for durability
- \* Vent zips under arms
- \* Adjustable ergo braces
- \* Adjustable waist
- \* Adjustable hood
- \* Removable hood
- \* Integrated leg gaiters with metal hooks
- \* Integrated hand gaiters
- \* 6 exterior pockets
- \* Goggle pocket
- \* Cellphone pocket
- \* Mesh and tafeta lining
- \* Kill switch D-ring

\* Use with Merino Wool layering  
to ensure top performance





# PRIVUS MONO SUIT RASBERRY RADIANCE

900216-053-SIZE

CORDURA

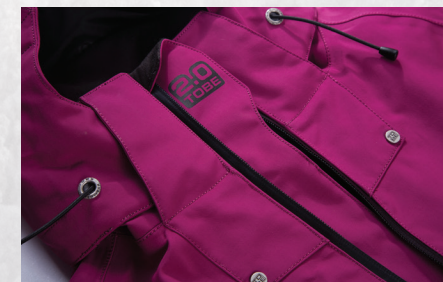
Sympatex

2.0  
TOBE

Shell: 2 layer Sympatex® Cordura®  
Membrane: Sympatex® 45,000mm  
Sealed seams: Fully seam sealed  
Insulation: Non-insulated  
Sizing: 2XS - 4XL

- \* 100% windproof
- \* 100% waterproof
- \* Optimal breathability
- \* YKK Aquaguard zippers
- \* Kevlar reinforcements
- \* Cordura® fabrics
- \* Reinforced seams
- \* Double stitching for durability
- \* Vent zips under arms
- \* Adjustable ergo braces
- \* Adjustable waist
- \* Adjustable hood
- \* Removable hood
- \* Integrated leg gaiters with metal hooks
- \* Integrated hand gaiters
- \* 6 exterior pockets
- \* Goggle pocket
- \* Cellphone pocket
- \* Mesh and tafeta lining
- \* Kill switch D-ring

\* Use with Merino Wool layering  
to ensure top performance





# PRIVUS MONO SUIT MELLOW GREEN

900216-092-SIZE

CORDURA

Sympatex

2.0  
TOBE

Shell: 2 layer Sympatex® Cordura®  
Membrane: Sympatex® 45,000mm  
Sealed seams: Fully seam sealed  
Insulation: Non-insulated  
Sizing: 2XS - 4XL

- \* 100% windproof
- \* 100% waterproof
- \* Optimal breathability
- \* YKK Aquaguard zippers
- \* Kevlar reinforcements
- \* Cordura® fabrics
- \* Reinforced seams
- \* Double stitching for durability
- \* Vent zips under arms
- \* Adjustable ergo braces
- \* Adjustable waist
- \* Adjustable hood
- \* Removable hood
- \* Integrated leg gaiters with metal hooks
- \* Integrated hand gaiters
- \* 6 exterior pockets
- \* Goggle pocket
- \* Cellphone pocket
- \* Mesh and tafeta lining
- \* Kill switch D-ring

*\* Use with Merino Wool layering  
to ensure top performance*





# PRIVUS MONO SUIT DARK OLIVE

900216-099-SIZE

CORDURA

Symptex

2.0  
TOBE

Shell: 2 layer Sympatex® Cordura®  
Membrane: Sympatex® 45,000mm  
Sealed seams: Fully seam sealed  
Insulation: Non-insulated  
Sizing: 2XS - 4XL

- \* 100% windproof
- \* 100% waterproof
- \* Optimal breathability
- \* YKK Aquaguard zippers
- \* Kevlar reinforcements
- \* Cordura® fabrics
- \* Reinforced seams
- \* Double stitching for durability
- \* Vent zips under arms
- \* Adjustable ergo braces
- \* Adjustable waist
- \* Adjustable hood
- \* Removable hood
- \* Integrated leg gaiters with metal hooks
- \* Integrated hand gaiters
- \* 6 exterior pockets
- \* Goggle pocket
- \* Cellphone pocket
- \* Mesh and tafeta lining
- \* Kill switch D-ring

\* Use with Merino Wool layering  
to ensure top performance





# PRIVUS JACKET LEGION BLUE

050216-002-SIZE

CORDURA

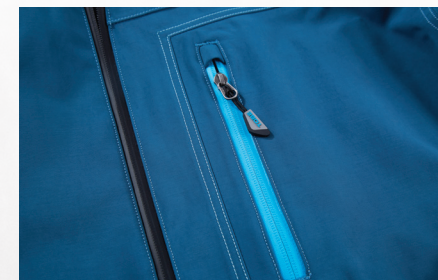
Sympatex

2.0  
TOBE

Shell: 2 layer Sympatex® Cordura®  
Membrane: Sympatex® 45,000mm  
Sealed seams: Fully seam sealed  
Insulation: Non-insulated  
Sizing: 2XS - 4XL

- \* 100% windproof
- \* 100% waterproof
- \* Optimal breathability
- \* YKK Aquaguard zippers
- \* Cordura® fabrics
- \* Reinforced seams
- \* Double stitching for durability
- \* Vent zips under arms
- \* Adjustable waist
- \* Removable hood
- \* Adjustable hood
- \* Integrated hand gaiters
- \* Removable snowskirt
- \* 4 exterior pockets
- \* Goggle pocket
- \* Cellphone pocket
- \* Mesh and tafeta lining
- \* Kill switch D-ring

*\* Use with Merino Wool layering  
to ensure top performance*





# PRIVUS JACKET CHILI PEPPER

050216-003-SIZE

CORDURA

Sympatex

2.0  
TOBE

Shell: 2 layer Sympatex® Cordura®  
Membrane: Sympatex® 45,000mm  
Sealed seams: Fully seam sealed  
Insulation: Non-insulated  
Sizing: 2XS - 4XL

- \* 100% windproof
- \* 100% waterproof
- \* Optimal breathability
- \* YKK Aquaguard zippers
- \* Cordura® fabrics
- \* Reinforced seams
- \* Double stitching for durability
- \* Vent zips under arms
- \* Adjustable waist
- \* Removable hood
- \* Adjustable hood
- \* Integrated hand gaiters
- \* Removable snowskirt
- \* 4 exterior pockets
- \* Goggle pocket
- \* Cellphone pocket
- \* Mesh and tafeta lining
- \* Kill switch D-ring

*\* Use with Merino Wool layering  
to ensure top performance*





# PRIVUS JACKET CITRUS

050216-005-SIZE

CORDURA

Sympatex

2.0  
TOBE

Shell: 2 layer Sympatex® Cordura®  
Membrane: Sympatex® 45,000mm  
Sealed seams: Fully seam sealed  
Insulation: Non-insulated  
Sizing: 2XS - 4XL

- \* 100% windproof
- \* 100% waterproof
- \* Optimal breathability
- \* YKK Aquaguard zippers
- \* Cordura® fabrics
- \* Reinforced seams
- \* Double stitching for durability
- \* Vent zips under arms
- \* Adjustable waist
- \* Removable hood
- \* Adjustable hood
- \* Integrated hand gaiters
- \* Removable snowskirt
- \* 4 exterior pockets
- \* Goggle pocket
- \* Cellphone pocket
- \* Mesh and tafeta lining
- \* Kill switch D-ring

\* Use with Merino Wool layering  
to ensure top performance





# PRIVUS JACKET MELLOW GREEN

050216-092-SIZE

CORDURA

Sympatex

2.0  
TOBE

Shell: 2 layer Sympatex® Cordura®  
Membrane: Sympatex® 45,000mm  
Sealed seams: Fully seam sealed  
Insulation: Non-insulated  
Sizing: 2XS - 4XL

- \* 100% windproof
- \* 100% waterproof
- \* Optimal breathability
- \* YKK Aquaguard zippers
- \* Cordura® fabrics
- \* Reinforced seams
- \* Double stitching for durability
- \* Vent zips under arms
- \* Adjustable waist
- \* Removable hood
- \* Adjustable hood
- \* Integrated hand gaiters
- \* Removable snowskirt
- \* 4 exterior pockets
- \* Goggle pocket
- \* Cellphone pocket
- \* Mesh and tafeta lining
- \* Kill switch D-ring

\* Use with Merino Wool layering  
to ensure top performance





# PRIVUS JACKET DARK OLIVE

050216-099-SIZE

CORDURA

Sympatex

2.0  
TOBE

Shell: 2 layer Sympatex® Cordura®  
Membrane: Sympatex® 45,000mm  
Sealed seams: Fully seam sealed  
Insulation: Non-insulated  
Sizing: 2XS - 4XL

- \* 100% windproof
- \* 100% waterproof
- \* Optimal breathability
- \* YKK Aquaguard zippers
- \* Cordura® fabrics
- \* Reinforced seams
- \* Double stitching for durability
- \* Vent zips under arms
- \* Adjustable waist
- \* Removable hood
- \* Adjustable hood
- \* Integrated hand gaiters
- \* Removable snowskirt
- \* 4 exterior pockets
- \* Goggle pocket
- \* Cellphone pocket
- \* Mesh and tafeta lining
- \* Kill switch D-ring

\* Use with Merino Wool layering  
to ensure top performance





# PRIVUS PANT LEGION BLUE

100216-002-SIZE

Shell: 2 layer Sympatex® Cordura®  
Membrane: Sympatex® 45,000mm  
Sealed seams: Fully seam sealed  
Insulation: Non-insulated  
Sizing: 2XS - 4XL

- \* 100% windproof
- \* 100% waterproof
- \* Optimal breathability
- \* Detachable bib
- \* YKK Aquaguard zippers
- \* Cordura® fabrics
- \* Reinforced seams
- \* Double stitching for durability
- \* Adjustable waist
- \* 5 exterior pockets
- \* Tafeta lining
- \* Kill switch D-ring

*\* Use with Merino Wool layering  
to ensure top performance*



CORDURA

Sympatex

2.0  
TOBE



# PRIVUS PANT JET BLACK

100216-001-SIZE

Shell: 2 layer Sympatex® Cordura®  
Membrane: Sympatex® 45,000mm  
Sealed seams: Fully seam sealed  
Insulation: Non-insulated  
Sizing: 2XS - 4XL

- \* 100% windproof
- \* 100% waterproof
- \* Optimal breathability
- \* Detachable bib
- \* YKK Aquaguard zippers
- \* Cordura® fabrics
- \* Reinforced seams
- \* Double stitching for durability
- \* Adjustable waist
- \* 5 exterior pockets
- \* Tafeta lining
- \* Kill switch D-ring

*\* Use with Merino Wool layering  
to ensure top performance*



CORDURA

Sympatex

2.0  
TOBE



# PRIVUS PANT DARK OLIVE

100216-099-SIZE

Shell: 2 layer Sympatex® Cordura®  
Membrane: Sympatex® 45,000mm  
Sealed seams: Fully seam sealed  
Insulation: Non-insulated  
Sizing: 2XS - 4XL

- \* 100% windproof
- \* 100% waterproof
- \* Optimal breathability
- \* Detachable bib
- \* YKK Aquaguard zippers
- \* Cordura® fabrics
- \* Reinforced seams
- \* Double stitching for durability
- \* Adjustable waist
- \* 5 exterior pockets
- \* Tafeta lining
- \* Kill switch D-ring

*\* Use with Merino Wool layering  
to ensure top performance*



CORDURA

Sympatex

2.0  
TOBE



# THE CONTEGO SERIES

The products in the Contego series have been engineered to be your premiere backcountry gear.

No expenses or efforts has been spared to ensure that these products will put up with the extreme abuse that comes with backcountry riding.

The industry leading Sympatex membrane offers an exeptional 100% waterproof garment with outstanding breathability.

With the Contego collection we accomplished what we set out to do, to offer the most durable and comfortable riding gear on the market.





# CONTEGO MONO SUIT JET BLACK

900116-001-SIZE



Shell: 3 layer Sympatex® Nylon  
Membrane: Sympatex® 45,000mm  
Sealed seams: Fully seam sealed  
Insulation: Non-insulated  
Sizing: 2XS - 4XL

- \* 100% windproof
  - \* 100% waterproof
  - \* Optimal breathability
  - \* YKK Aquaguard zippers
  - \* Kevlar reinforcements
  - \* Removable knee pads
  - \* Light seat insulation
  - \* Durable fabrics
  - \* Reinforced seams
  - \* Double stitching for durability
  - \* Vent zips under arms
  - \* Adjustable ergo braces
  - \* Adjustable waist
  - \* Adjustable hood
  - \* Removable hood
  - \* Full leg zip
  - \* Integrated leg gaiters with metal hooks
  - \* Integrated hand gaiters
  - \* Reflective piping
  - \* 6 exterior pockets
  - \* Goggle pocket
  - \* Cellphone pocket
  - \* Mesh and tafeta lining
  - \* Kill switch D-ring
- \* Use with Merino Wool layering to ensure top performance*





# CONTEGO MONO SUIT GUNMETAL

900116-006-SIZE



Shell: 3 layer Sympatex® Nylon  
Membrane: Sympatex® 45,000mm  
Sealed seams: Fully seam sealed  
Insulation: Non-insulated  
Sizing: 2XS - 4XL

- \* 100% windproof
- \* 100% waterproof
- \* Optimal breathability
- \* YKK Aquaguard zippers
- \* Kevlar reinforcements
- \* Removable knee pads
- \* Light seat insulation
- \* Durable fabrics
- \* Reinforced seams
- \* Double stitching for durability
- \* Vent zips under arms
- \* Adjustable ergo braces
- \* Adjustable waist
- \* Adjustable hood
- \* Removable hood
- \* Full leg zip
- \* Integrated leg gaiters with metal hooks
- \* Integrated hand gaiters
- \* Reflective piping
- \* 6 exterior pockets
- \* Goggle pocket
- \* Cellphone pocket
- \* Mesh and tafeta lining
- \* Kill switch D-ring

*\* Use with Merino Wool layering to ensure top performance*





# CONTEGO JACKET JET BLACK

050116-001-SIZE



Shell: 3 layer Sympatex® Nylon  
Membrane: Sympatex® 45,000mm  
Sealed seams: Fully seam sealed  
Insulation: Non-insulated  
Sizing: 2XS - 4XL

- \* 100% windproof
- \* 100% waterproof
- \* Optimal breathability
- \* YKK Aquaguard zippers
- \* Durable fabrics
- \* Reinforced seams
- \* Double stitching for durability
- \* Vent zips under arms
- \* Adjustable waist
- \* Adjustable hood
- \* Removable hood
- \* Integrated hand gaiters
- \* Removable snowskirt
- \* 4 exterior pockets
- \* Goggle pocket
- \* Cellphone pocket
- \* Reflective piping
- \* Mesh and tafeta lining
- \* Kill switch D-ring

*\* Use with Merino Wool layering  
to ensure top performance*





# CONTEGO JACKET GUNMETAL

050116-006-SIZE



Shell: 3 layer Sympatex® Nylon  
Membrane: Sympatex® 45,000mm  
Sealed seams: Fully seam sealed  
Insulation: Non-insulated  
Sizing: 2XS - 4XL

- \* 100% windproof
- \* 100% waterproof
- \* Optimal breathability
- \* YKK Aquaguard zippers
- \* Durable fabrics
- \* Reinforced seams
- \* Double stitching for durability
- \* Vent zips under arms
- \* Adjustable waist
- \* Adjustable hood
- \* Removable hood
- \* Integrated hand gaiters
- \* Removable snowskirt
- \* 4 exterior pockets
- \* Goggle pocket
- \* Cellphone pocket
- \* Reflective piping
- \* Mesh and tafeta lining
- \* Kill switch D-ring

\* Use with Merino Wool layering  
to ensure top performance





# CONTEGO BIB JET BLACK

100116-001-SIZE



Shell: 3 layer Sympatex® Nylon  
Membrane: Sympatex® 45,000mm  
Sealed seams: Fully seam sealed  
Insulation: Non-insulated  
Sizing: 2XS - 4XL

- \* 100% windproof
- \* 100% waterproof
- \* Optimal breathability
- \* Kevlar reinforcements
- \* Removable knee pads
- \* Light seat insulation
- \* YKK Aquaguard zippers
- \* Durable fabrics
- \* Reinforced seams
- \* Double stitching for durability
- \* Full leg zip
- \* Ergo braces
- \* Integrated snow gaiters
- \* 4 exterior pockets
- \* Mesh and tafeta lining
- \* Kill switch D-ring

\* Use with Merino Wool layering  
to ensure top performance





# CONTEGO BIB GUNMETAL

100116-006-SIZE



Shell: 3 layer Sympatex® Nylon  
Membrane: Sympatex® 45,000mm  
Sealed seams: Fully seam sealed  
Insulation: Non-insulated  
Sizing: 2XS - 4XL

- \* 100% windproof
- \* 100% waterproof
- \* Optimal breathability
- \* Kevlar reinforcements
- \* Removable knee pads
- \* Light seat insulation
- \* YKK Aquaguard zippers
- \* Durable fabrics
- \* Reinforced seams
- \* Double stitching for durability
- \* Full leg zip
- \* Ergo braces
- \* Integrated snow gaiters
- \* 4 exterior pockets
- \* Mesh and tafeta lining
- \* Kill switch D-ring

*\* Use with Merino Wool layering  
to ensure top performance*







## THE OPUS SERIES

Take charge of the coldest conditions with the most technically advanced insulated outerwear we've ever made. With the unique breathability and waterproofing of the SympaTex® membrane combined with the strategically placed insulation we are able to balance core warmth with the breathability and mobility needed for riding.

No matter if you ride far up north or are ripping down the trails of the mid-west the Opus series sets a modern benchmark for insulated snowmobile garments.





# OPUS MONO SUIT JET BLACK

900316-001-SIZE



Shell: 3 layer Sympatex® Nylon  
Membrane: Sympatex® 45,000mm  
Sealed seams: Fully seam sealed  
Insulation: Light insulation  
Sizing: 2XS - 4XL

- \* 100% windproof
- \* 100% waterproof
- \* Optimal breathability
- \* YKK Aquaguard zippers
- \* Kevlar reinforcements
- \* Durable fabrics
- \* Reinforced seams
- \* Double stitching for durability
- \* Vent zips under arms
- \* Adjustable ergo braces
- \* Adjustable waist
- \* Adjustable hood
- \* Removable hood
- \* Neck expander
- \* Full leg zip
- \* Integrated leg gaiters with metal hooks
- \* Integrated hand gaiters
- \* Belt loops
- \* 7 exterior pockets
- \* 2 big cargo pockets
- \* Goggle pocket
- \* Cellphone pocket
- \* Mesh and tafeta lining
- \* Kill switch D-ring

*\* Use with Merino Wool layering  
to ensure top performance*





# OPUS MONO SUIT GUNMETAL

900316-006-SIZE



Shell: 3 layer Sympatex® Nylon  
Membrane: Sympatex® 45,000mm  
Sealed seams: Fully seam sealed  
Insulation: Light insulation  
Sizing: 2XS - 4XL

- \* 100% windproof
- \* 100% waterproof
- \* Optimal breathability
- \* YKK Aquaguard zippers
- \* Kevlar reinforcements
- \* Durable fabrics
- \* Reinforced seams
- \* Double stitching for durability
- \* Vent zips under arms
- \* Adjustable ergo braces
- \* Adjustable waist
- \* Adjustable hood
- \* Removable hood
- \* Neck expander
- \* Full leg zip
- \* Integrated leg gaiters with metal hooks
- \* Integrated hand gaiters
- \* Belt loops
- \* 7 exterior pockets
- \* 2 big cargo pockets
- \* Goggle pocket
- \* Cellphone pocket
- \* Mesh and tafeta lining
- \* Kill switch D-ring

*\* Use with Merino Wool layering  
to ensure top performance*





# OPUS MONO SUIT DARK OLIVE

900316-099-SIZE

CORDURA

Symptex

2.0  
TOBE

Shell: 2 layer Sympatex® Cordura®  
Membrane: Sympatex® 45,000mm  
Sealed seams: Fully seam sealed  
Insulation: Light insulation  
Sizing: 2XS - 4XL

- \* 100% windproof
- \* 100% waterproof
- \* Optimal breathability
- \* YKK Aquaguard zippers
- \* Kevlar reinforcements
- \* Cordura® fabrics
- \* Reinforced seams
- \* Double stitching for durability
- \* Vent zips under arms
- \* Adjustable ergo braces
- \* Adjustable waist
- \* Adjustable hood
- \* Removable hood
- \* Neck expander
- \* Full leg zip
- \* Integrated leg gaiters with metal hooks
- \* Integrated hand gaiters
- \* Belt loops
- \* 7 exterior pockets
- \* 2 big cargo pockets
- \* Goggle pocket
- \* Cellphone pocket
- \* Mesh and tafeta lining
- \* Kill switch D-ring

*\* Use with Merino Wool layering  
to ensure top performance*









# THE CONTEGO BOOT

As with the rest of the products in the Contego series these boots are designed to never fail you. They're not very colorful or fancy, but they're rugged, protective and with the Sympatex Moisture-Tech membrane they will keep you absolutely dry.

With the extreme abrasive wear from modern running boards we turned to the heavy industries to find an outsole that offers the traction and durability we were looking for.

Turns out the secret recipe was simple, high quality natural rubber.

Same thing with the lacing, we kept it simple and traditional. No fancy wires, reels, or handles, just a couple of laces for that tried and true fit and feel.

Wool is an amazing natural material that helps create dry and comfortable environment.

It should always be your first layer next to your skin.

It's no secret that we are big in to wool so much that we fitted the boots with wool insoles.





# CONTEGO BOOT JET BLACK

700116-001-SIZE

Membrane: Sympatex® Moisture-Tech  
Sizing: US 7 - 13, EU 39 - 47

- \* 100% Waterproof
- \* Optimal breathability
- \* Developed for snowmobiling
- \* Thin profile
- \* Durable high grip outsole
- \* Durable fabrics
- \* Moisture wicking liner
- \* High quality laces
- \* Removable wool insole
- \* Snow bike shifter friendly toe

*\* Use with Merino Wool socks to ensure top performance*





# CONTEGO BOOT SPEED JET BLACK

700216-001-SIZE

Membrane: Sympatex® Moisture-Tech  
Sizing: US 7 - 13, EU 39 - 47

- \* 100% Waterproof
- \* Optimal breathability
- \* Developed for snowmobiling
- \* Thin profile
- \* Durable high grip outsole
- \* Durable fabrics
- \* Moisture wicking liner
- \* High quality laces
- \* Removable wool insole
- \* Snow bike shifter friendly toe
- \* Powerstrap
- \* Section Control Lacing
- \* Speed lacing

*\* Use with Merino Wool socks to ensure top performance*





# CONTEGO BOOT SPEED GUNMETAL

700216-006-SIZE



Membrane: Sympatex® Moisture-Tech  
Sizing: US 7 - 13, EU 39 - 47

- \* 100% Waterproof
- \* Optimal breathability
- \* Developed for snowmobiling
- \* Thin profile
- \* Durable high grip outsole
- \* Durable fabrics
- \* Moisture wicking liner
- \* High quality laces
- \* Removable wool insole
- \* Snow bike shifter friendly toe
- \* Powerstrap
- \* Section Control Lacing
- \* Speed lacing

\* Use with Merino Wool socks to ensure top performance





# THE CAPTO GLOVE SERIES

Your hands and fingers are the most sophisticated tools nature ever created.

So we thought you deserved some wicked gloves to keep you comfortable and dry.

The gloves in our Capto series are made of only the finest materials. We have sourced ultra high end natural sheeps leather from Pittards in England.

The manufacturing and treatment of their leather relies on hundreds of years of tradition and craft skills.

Sympatex contributed their industry leading fabrics and liners to make the gloves exceptionally breathable and waterproof.

We know you will love the small but important details like our quick-release system on the gauntlet, our innovative goggle wiper and the leather on the back of the thumb we turned inside-out to help you wipe the fog off the lens.

The devil is in the details.





# CAPTO GAUNTLET DARK OLIVE

800116-099-SIZE

CORDURA

Sympatex

2.0  
TOBE

Shell: 2 layer Sympatex® Cordura®  
Membrane: Sympatex® 45,000mm  
Insulation: 20g  
Sizing: S - 2XL

- \* 100% windproof
- \* 100% waterproof
- \* Optimal breathability
- \* Pittards® high quality leather
- \* Full leather fingers
- \* Durable Cordura® fabric
- \* Optimized design with few seams
- \* Perfect handlebar grip
- \* Pre-curved shape
- \* Extended gauntlet
- \* One hand pull/release cord
- \* Embroidered logo





# CAPTO GAUNTLET JET BLACK

800116-001-SIZE

Shell: 2 layer Sympatex® Cordura®  
Membrane: Sympatex® 45,000mm  
Insulation: 20g  
Sizing: S - 2XL

- \* 100% windproof
- \* 100% waterproof
- \* Optimal breathability
- \* Pittards® high quality leather
- \* Full leather fingers
- \* Durable Cordura® fabric
- \* Optimized design with few seams
- \* Perfect handlebar grip
- \* Pre-curved shape
- \* Extended gauntlet
- \* One hand pull/release cord
- \* Embroidered logo



CORDURA

Sympatex

2.0  
TOBE





# CAPTO GAUNTLET CITRUS

800116-005-SIZE

Shell: 2 layer Sympatex® Cordura®  
Membrane: Sympatex® 45,000mm  
Insulation: 20g  
Sizing: S - 2XL

- \* 100% windproof
- \* 100% waterproof
- \* Optimal breathability
- \* Pittards® high quality leather
- \* Full leather fingers
- \* Durable Cordura® fabric
- \* Optimized design with few seams
- \* Perfect handlebar grip
- \* Pre-curved shape
- \* Extended gauntlet
- \* One hand pull/release cord
- \* Embroidered logo



CORDURA

Sympatex

2.0  
TOBE





# CAPTO UNDERCUFF LEGION BLUE

800216-002-SIZE

Shell: 2 layer Sympatex® Cordura®  
Membrane: Sympatex® 45,000mm  
Insulation: 20g  
Sizing: S - 2XL

- \* 100% windproof
- \* 100% waterproof
- \* Optimal breathability
- \* Pittards® high quality leather
- \* Durable Cordura® fabric
- \* Optimized design with few seams
- \* Perfect handlebar grip
- \* Pre-curved shape
- \* Velcro wrist closure
- \* Embroidered logo



CORDURA

Sympatex

2.0  
TOBE

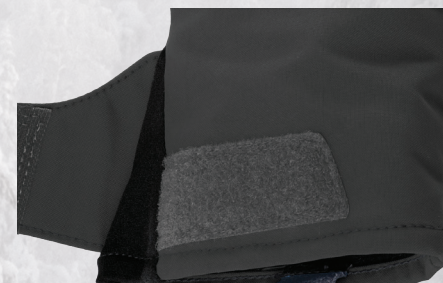
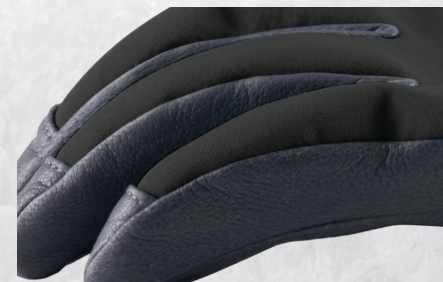


# CAPTO UNDERCUFF JET BLACK

800216-001-SIZE

Shell: 2 layer Sympatex® Cordura®  
Membrane: Sympatex® 45,000mm  
Insulation: 20g  
Sizing: S - 2XL

- \* 100% windproof
- \* 100% waterproof
- \* Optimal breathability
- \* Pittards® high quality leather
- \* Durable Cordura® fabric
- \* Optimized design with few seams
- \* Perfect handlebar grip
- \* Pre-curved shape
- \* Velcro wrist closure
- \* Embroidered logo



CORDURA

Sympatex

2.0  
TOBE



# CAPTO UNDERCUFF CITRUS

800216-005-SIZE

Shell: 2 layer Sympatex® Cordura®  
Membrane: Sympatex® 45,000mm  
Insulation: 20g  
Sizing: S - 2XL

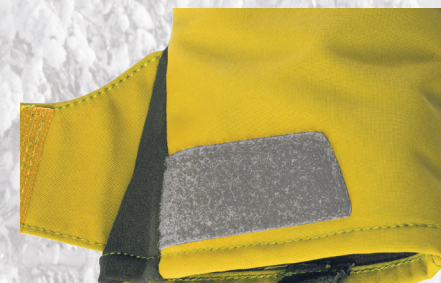
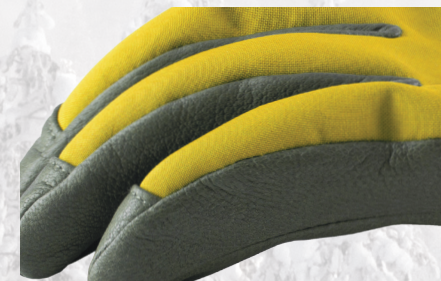
- \* 100% windproof
- \* 100% waterproof
- \* Optimal breathability
- \* Pittards® high quality leather
- \* Durable Cordura® fabric
- \* Optimized design with few seams
- \* Perfect handlebar grip
- \* Pre-curved shape
- \* Velcro wrist closure
- \* Embroidered logo



CORDURA

Sympatex

2.0  
TOBE





# CAPTO UNDERCUFF CHRIS

800216-011-SIZE

Shell: 2 layer Sympatex® Cordura®  
Membrane: Sympatex® 45,000mm  
Insulation: 20g  
Sizing: S - 2XL

- \* CHRIS BROWN signature model
- \* 100% windproof
- \* 100% waterproof
- \* Optimal breathability
- \* Pittards® high quality leather
- \* Durable Cordura® fabric
- \* Optimized design with few seams
- \* Perfect handlebar grip
- \* Pre-curved shape
- \* Velcro wrist closure
- \* Embroidered logo



## 101 COLLECTION

We will never forget where we came from.  
Our old beat up sleds from our teenage years  
we worked so hard to afford will always  
have a place in our hearts.

Our entry level collection lacks none of  
features you expect to find on gear truly made  
for riding.

From snow skirts to seam-sealing and the  
storm-stopping membrane performance  
it has it all.

Dive deep into winter with the progressive  
style and balanced warmth of  
the 101 collection.



# VECTOR JACKET 101

050316-001-SIZE (BLACK)

050316-003-SIZE (RED)

050316-005-SIZE (CAMO)

Shell: 2 layer Polyester  
Membrane: 10,000mm  
Sealed seams: Fully seam sealed  
Insulation: 40g  
Sizing: 2XS - 4XL

- \* Windproof
- \* Waterproof
- \* Breathable
- \* Vent zips under arms
- \* Adjustable waist
- \* Adjustable hood
- \* Integrated hand gaiters
- \* Snowskirt
- \* 4 exterior pockets
- \* Goggle pocket
- \* Cellphone pocket
- \* Tafeta lining
- \* Kill switch D-ring

*\* Use with Merino Wool layering  
to ensure top performance*





# VECTOR PANT 101

100316-001-SIZE (BLACK)

100316-003-SIZE (RED)

Shell: 2 layer Polyester  
Membrane: 10,000mm  
Sealed seams: Fully seam sealed  
Insulation: 40g  
Sizing: 2XS - 4XL

- \* Windproof
- \* Waterproof
- \* Breathable
- \* Belt loops
- \* Leg gaiter with metal hook
- \* 4 exterior pockets
- \* Tafeta lining
- \* Kill switch D-ring

*\* Use with Merino Wool layering  
to ensure top performance*







Layering your clothing is a tried-and-true way to ensure your comfort in the outdoors. The beauty of this simple concept is that it allows you to make quick adjustments based on your activity level and changes in the weather. The new layering concept we developed together with Woolpower is based on a natural product called Merino wool. We choose this material over the more common synthetic materials for several reasons.

### **NATURAL INSULATION AND WARMTH**

Merino wool provides natural insulation that allows the body to retain heat and maintain higher comfort levels. The natural crimp of merino fibre enables it to keep heat close to the body by trapping tiny air pockets within the fibres.

### **COMFORT AND BREATHABILITY**

Merino wool is a moisture wicking fibre. It draws moisture away from the skin, release it into the air or the next of your clothing layers. This helps to regulate body temperature, keeping the body warm in cold weather and cool if it is hot. It will absorb up to a third of its weight in water without feeling clammy and retains some of its warmth even when very wet.

### **ODOUR FREE**

Merino wool is an anti-microbial material and as a result has natural resistance to odour. Due to this fact, Merino garments do not need to be washed as often as synthetics. In fact you may just hang it out for the night when smelly.

### **MERINO VS SYNTHETIC**

Synthetic fibres such as polypropylene & polyester have a much simpler structure than natural wool fibres. These petroleum based fabrics do not absorb or release moisture and cannot breathe due to the simpler construction of synthetic fibres. When knitted into fabric, they are limited to one-way moisture movement - simply no comparison to the superb insulation elements of merino wool.

### **MERINO VS TRADITIONAL WOOL**

Compared to traditional wool, merino is a smoother and finer fibre, which gives it a vastly superior texture and handle compared to traditional coarse wools. The smooth silk-like feel ensures the wearer will enjoy an 'itch-free' experience, even on sensitive skin.





## THE BASE LAYER

### MOISTURE MANAGEMENT

This is your next-to-skin layer. More than any other layer, the base layer helps regulate your body temperature by moving perspiration away from your skin. Trapped inside your clothing, perspiration can leave you chilled or damp no matter how well your shell layer fends off rain and snow.

Keeping dry is important for maintaining a cool body temperature in the summer and avoiding hypothermia in the winter. If you've ever worn a cotton T-shirt under your raincoat while you hiked, you probably remember feeling wet and clammy, even though you weren't getting wet from the rain itself. Cotton is an example of a fabric that retains perspiration and can leave you vulnerable to unwanted chills.

For outdoor comfort, your base layer should be made of merino wool. Rather than absorbing moisture, these fabrics transport (or "wick") perspiration away from your skin, dispersing it on the outer surface where it can evaporate. The result: You stay drier even when you sweat, and your shirt dries faster afterwards.

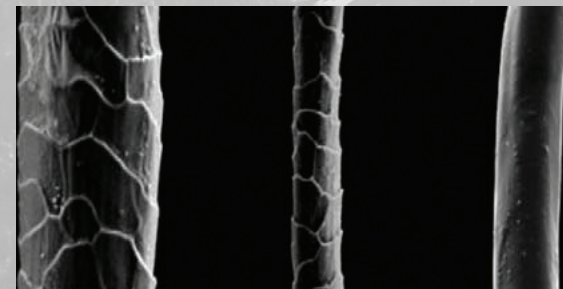


## THE MIDDLE LAYER

### INSULATION

The insulating layer helps you retain heat by trapping air close to your body. Polyester fleece vests, jackets and tights are classic examples of insulation ideal for outdoor activities. They not only trap air but are also made with moisture-wicking fibers to help keep you dry.

Natural fibers such as wool and goose down are excellent insulators. Wool sweaters and shirts (especially the new generation of merino wool products) offer soft, reliable warmth and keep on insulating even when wet.



Regular wool

Merino Wool

Synthetic fibre



# LAYERING BASE LAYERS

## ROUNDNECK

Unisex 500113-001--SIZE



Material: 80% Merino wool  
Sizing: XXS-XXL

- \* Perfect for high-level activity
- \* Great moisture vapour regulation
- \* Flat-knitted
- \* Optimized design with few seams
- \* Can be used all year around
- \* Lengthwise seams placed for optimal comfort
- \* Sleeves have raglan seams to prevent rubbing
- \* Extended back

## LONG JOHNS

M's 510113-001-SIZE  
W's 510213-001-SIZE



Material: 80% Merino wool  
Sizing: XXS-XXL

- \* Perfect for high-level activity
- \* Great moisture vapour regulation
- \* Flat-knitted
- \* Optimized design with few seams
- \* Can be used all year around
- \* Smooth elastic waistband

## 3/4 LONG JOHNS

M's 6331-SIZE  
W's 4331-SIZE



Material: 80% Merino wool  
Sizing: XXS-XXL

- \* Perfect for high-level activity
- \* Great moisture vapour regulation
- \* Flat-knitted
- \* Optimized design with few seams
- \* Can be used all year around
- \* Smooth elastic waistband
- \* Optimal usage with high socks



## BOXERS

M's 510314-001-SIZE

W's 510414-001-SIZE



Material: 80% Merino wool  
Sizing: XXS-XXL

- \* Perfect for high-level activity
- \* Great moisture vapour regulation
- \* Flat-knitted
- \* Optimized design with few seams
- \* Can be used all year around
- \* Smooth elastic waistband

## SOCK SHORT/HIGH

Short 8411-SIZE

High 8481-SIZE



Material: 60% Merino wool  
Sizing: 5-14

- \* Perfect for high-level activity
- \* Great moisture vapour regulation
- \* Flat-knitted
- \* Integrated toe seam
- \* Can be used all year around
- \* Snug comfortable fit

## ONE PIECE SUIT 200

Unisex 7382-SIZE



Material: 60% Merino wool  
Sizing: S-XXXL

- \* Great insulation
- \* Great moisture vapour regulation
- \* Full front two-way zipper
- \* Optimized design with few seams
- \* Circular knit fabric
- \* No gap in the back



# LAYERING MID LAYERS

## FULL ZIP 400

Unisex Grey 7214-12-SIZE  
Unisex Black 7214-02-SIZE



Material: 70% Merino wool  
Sizing: XXS-XXL

- \* Excelent insulating functionality
- \* Great moisture vapour regulation
- \* Circular knit fabric
- \* Optimized design with few seams
- \* Can be used all year around
- \* Lenghtwise seams placed for optimal comfort
- \* Sleeves have raglan seams to prevent rubbing
- \* Extended back

## LONG JOHNS 400

Unisex 7344-SIZE



Material: 70% Merino wool  
Sizing: XXS-XXL

- \* Excelent insulating functionality
- \* Great moisture vapour regulation
- \* Circular knit fabric
- \* Optimized design with few seams
- \* Can be used all year around
- \* Smooth elastic waistband

## SOCK HIGH 400

8484-SIZE



Material: 64% Merino wool  
Sizing: 5-14

- \* Excelent insulating functionality
- \* Warm even when wet
- \* Transports perspiration away from the skin
- \* Great moisture vapour regulation
- \* Integrated toe seam
- \* Terry knitted
- \* Snug comfortable fit



## ONE PIECE SUIT 400

Unisex 7384-SIZE



Material: 70% Merino wool  
Sizing: S-XXXL

- \* Excelent insulating functionality
- \* Transports perspiration away from the skin
- \* Full front two-way zipper
- \* Optimized design with few seams
- \* Terry loops wool garment
- \* Circular knit fabric
- \* No gap in the back

**TOBE**  
OUTERWEAR  
*Woolpower*®  
ÖSTERSUND

TOBE manufactures the worlds finest  
backcountry outerwear.

Woolpower design and produce functional and  
comfortable undergarments in fine merino wool.  
We are in the business of keeping people warm and dry  
because the outdoor life is as much of a  
passion for us as it is for you.

Together we are amazing.



MADE IN SWEDEN



# CASUAL WEAR BEANIES/HATS

---

## CORE

340116-001-111



## TOLLER

340216-001-111



## DRAFT

340316-001-111



## PREST

340416-001-111



## TORRIS

250116-001-SIZE



## ACT

250216-001-SIZE



## DESTINESIA

250109-001-SIZE





# CASUAL WEAR TEES/HOODS/SHIRTS

## BOSON

300116-006-SIZE



## GIMLET

300216-001-SIZE



## STOOGY

300316-003-SIZE



## VESTA

300416-008-SIZE



## STIPS

310116-003-SIZE



## MEND

310216-001-SIZE (JET BLACK)  
310216-099-SIZE (DARK OLIVE)



## FURLER

310316-001-SIZE (JET BLACK)  
310316-006-SIZE (MARL GREY)



## MORSE

310416-099-SIZE (DARK OLIVE)  
310416-006-SIZE (MARL GREY)







### **THE COMPACT HYDROPHILIC SYSTEM**

Although it sounds complicated, it is actually very straightforward. When the body sweats, it does so to protect itself from overheating. Although this natural process is vital, it also creates the risk that the body will be cooled excessively, for example if the moisture in the clothing removes the heat from the body. The consequences of this would be reduced performance and a high risk of catching a cold. The solution is called Sympatex.

### **EXCELLENT COMFORT WHATEVER THE WEATHER**

There is nothing more unpleasant than wet and cold clothing. Sympatex has therefore developed a special membrane which absorbs the water vapour and removes it through the clothing to the outside. This keeps the body warm and dry even in extreme situations. And the best thing about it is that the higher the physical activity, the more efficient the Sympatex membrane works. Functional textiles with a Sympatex membrane also provide effective protection from low temperatures and rain.

### **ECOLOGICAL PROPERTIES**

The membrane is 100% recycable, like a PET bottle. The polyester obtained during the recycling has 100% reusability. PTFE-free and PFC-free.



### **WATERPROOFING: 45000MM H2O**

The waterproofness of the membrane is measured on the basis of the water column under the pressure of which the material starts to allow water to penetrate through it. According to EN 343, a membrane is waterproof if it can resist a pressure of 1300MM. Pursuant to ISO 811, the Sympatex membrane far exceeds these values and is extremely waterproof with a water column of over 45000MM.

### **BREATHABILITY**

In contrast to other membrane technologies, the poreless compact Sympatex membrane is based on a physical and chemical principle. The water-attracting part of the membrane absorbs the moisture from the body and emits it to the outside by evaporation. The Sympatex membrane has no pores that can clog from oil, grease or salt from your sweat. The transportation of water vapor away from your body happens on a molecular level.

### **WINDPROOF**

The Sympatex membrane is 100% windproof, pursuant to Din EN ISO 9237. This property is important to avoid wind chill, the feeling of additional cold in the wind.

### **EASY CARE**

Wash your gear as often as you want, 100% function will remain guaranteed. Unlike porous membranes (EPTFE) the Sympatex membrane doesn't get damaged or lose its waterproofness by detergent residues. This means that the garments retain full performance even after frequent washing.



# WARRANTY

**TOBE Outerwear guarantees all it's Sympatex® products to be free of manufacturers defects in workmanship and the Sympatex® material for the life of the garment.**

**In the unlikely event of a failure, the garment will be repaired or replaced at no charge.**

**All other manufacturing or material defects are warranted for 1 year from the date of purchase.**

All TOBE Outerwear, mid and base layers and all casual wear are covered by a 1 year limited warranty against manufacturer or material defects.

All warranties apply only to the original purchaser with a valid proof of purchase. Rips, tears, cuts, punctures, burns, accidents, improper care, negligence, normal wear-and-tear will void the warranty even if the warranty issue is not related to these damages. The lifetime of a product unfortunately does not mean your lifetime, gear has it own lifetime depending on the circumstances under it's been used.

To start a warranty claim please visit [www.tobeouterwear.com](http://www.tobeouterwear.com) and find more detailed instructions.





# TOBEOUTERWEAR

TOBEOUTERWEAR.COM

We don't make gear for posers.  
TOBE is about providing well designed equipment for people who  
live their lives in the real backcountry.

These people don't care whether their friends are on  
a snowboard, a snowmobile, or a pair of skis.  
They all appreciate gear which lasts a  
full season without duct tape.